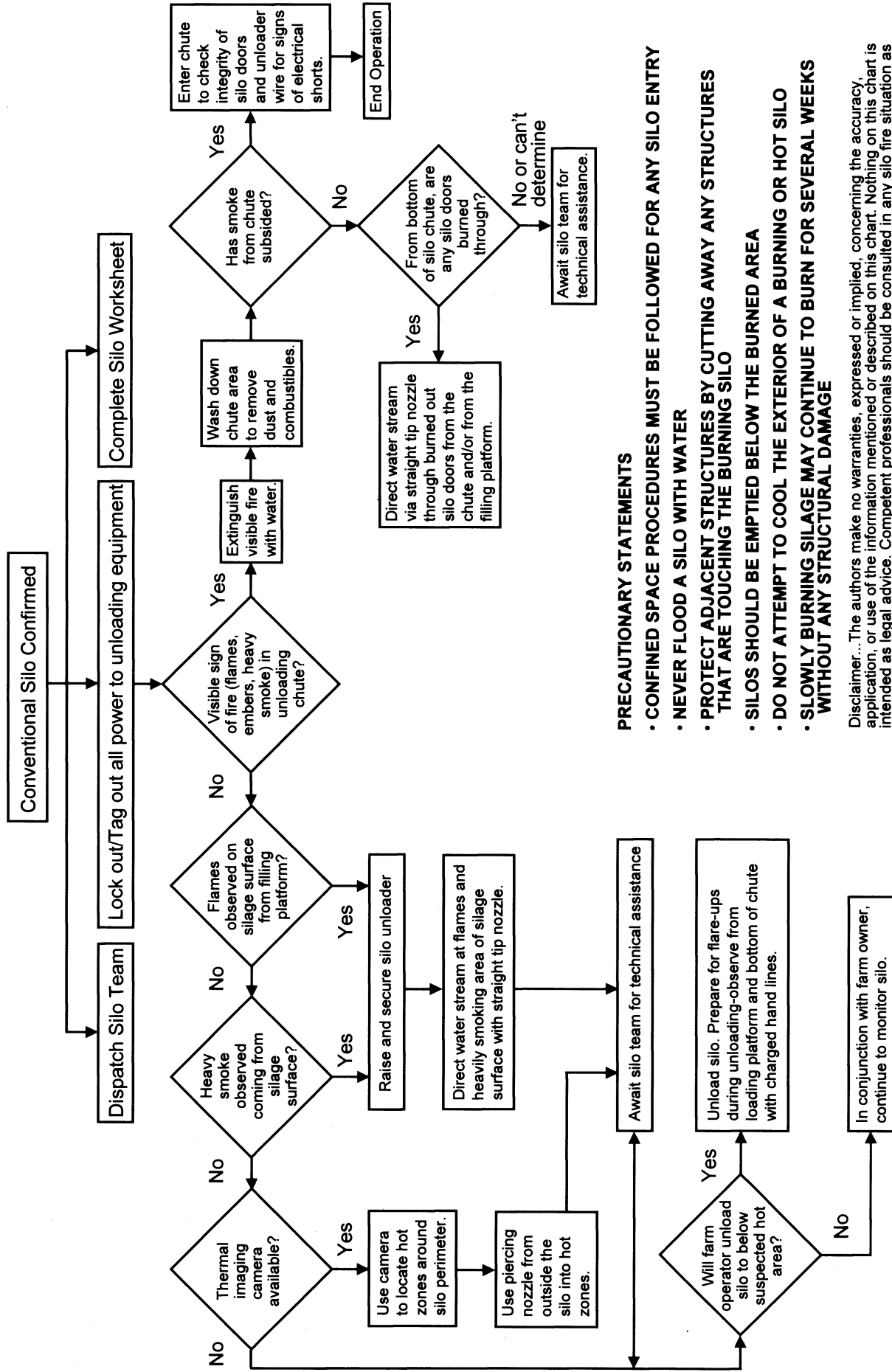


CONVENTIONAL SILO FIRE DECISION TREE



PRECAUTIONARY STATEMENTS

- CONFINED SPACE PROCEDURES MUST BE FOLLOWED FOR ANY SILO ENTRY
- NEVER FLOOD A SILO WITH WATER
- PROTECT ADJACENT STRUCTURES BY CUTTING AWAY ANY STRUCTURES THAT ARE TOUCHING THE BURNING SILO
- SILOS SHOULD BE EMPTIED BELOW THE BURNED AREA
- DO NOT ATTEMPT TO COOL THE EXTERIOR OF A BURNING OR HOT SILO
- SLOWLY BURNING SILAGE MAY CONTINUE TO BURN FOR SEVERAL WEEKS WITHOUT ANY STRUCTURAL DAMAGE

Disclaimer... The authors make no warranties, expressed or implied, concerning the accuracy, application, or use of the information mentioned or described on this chart. Nothing on this chart is intended as legal advice. Competent professionals should be consulted in any silo fire situation as well as on any medical or legal issues, if any, arising from the use of the information contained on this chart.

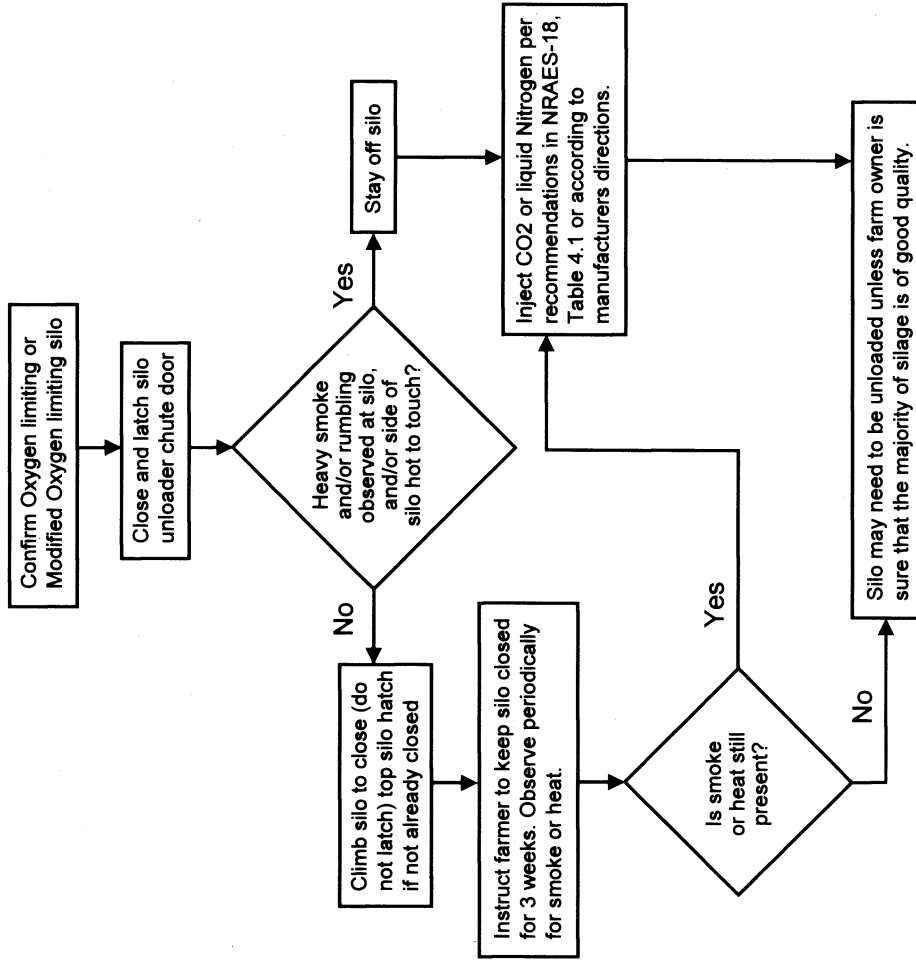
Davis E. Hill

Gregory R. Jelliff

Managing Agricultural Emergencies
Penn State University

©2004 The Pennsylvania State University

OXYGEN LIMITING AND MODIFIED OXYGEN LIMITING SILO FIRE DECISION TREE



PRECAUTIONARY STATEMENTS

- NEVER INJECT WATER OR FOAM INTO AN OXYGEN LIMITING OR MODIFIED OXYGEN LIMITING SILO
- NEVER COMMIT PERSONNEL TO ENTER A BURNING OR PARTIALLY BURNING OXYGEN LIMITING OR MODIFIED OXYGEN LIMITING SILO
- PROTECT ADJACENT STRUCTURES BY CUTTING AWAY ANY STRUCTURES THAT ARE TOUCHING THE BURNING SILO
- DO NOT ATTEMPT TO COOL THE EXTERIOR OF A BURNING OR HOT SILO
- ONLY TRAINED INDIVIDUALS SHOULD ATTEMPT TO INJECT GASES INTO OXYGEN LIMITING SILOS

SILO EMERGENCY WORKSHEET

EMERGENCY:

-----FIRE -----RESCUE

SILO TYPE (as originally constructed):

-----CONVENTIONAL -----OXYGEN LIMITING

CONSTRUCTION:

-----STEEL -----CONCRETE STAVE -----CONCRETE BLOCK

-----POURED CONCRETE -----TILE -----WOOD

-----OTHER-----

MANUFACTURER:-----

TIME CONTACTED:-----

MATERIAL IN SILO: CORN SILAGE----- HAYLAGE----- SORGHUM-----

HIGH MOISTURE GRAIN:----- OTHER-----

DATE OF LAST FILLING:-----

WAS NEW MATERIAL PUT ON TOP OF OLD MATERIAL?-----YES -----NO

SILO SIZE:----- HOW FULL IS SILO?-----

REMEMINDERS:

- LOCK OUT/TAG OUT SILO POWER
- RAISE UNLOADER OF CONVENTIONAL SILO DURING FIRE OPERATIONS
- RESTRICT AIR FROM ENTERING SILO DURING FIRE OPERATIONS
- RUN SILO BLOWER DURING RESCUE OPERATIONS

FOR TECHNICAL ASSISTANCE CALL PEMA EOC

800-424-7362